



AVA4-ES100 USER'S MANUAL



TABLE OF CONTENTS

1- WELCOME!	3
2- ELECTRICAL AND ELECTRONIC INTERFERENCES	4
3- LIMITATION OF LIABILITY	5
4- TRADEMARKS	5
5- COPYRIGHT	5
6- AUVITRAN WEBSITE / MORE INFORMATION	5
7- PACKAGE CONTAINS	5
8- PRECAUTIONS	6
9- TECHNICAL SPECIFICATIONS OF THE DEVICE	7
10- MECHANICAL OUTLINES	8
11- AVA4-ES100 REAR PANEL	10
11-1- AVA4-ES100 DC Power version	10
11-2- AVA4-ES100 AC Power version	10
11-3- Wiring	10
12- ARCHITECTURE USING AVA4-ES100	11
13- HARDWARE MODE SELECTION	12
13-1- Maximum Input Level for 0 dBfs	13
13-2- Phantom power supply	14
13-3- GPIO connector configuration	16
14- SOFTWARE DOWNLOAD AND INSTALLATION	18
15- GETTING START WITH AVA4-ES100 IN ES-MONITOR SOFTWARE	19
15-1- AVA4-ES100 Properties Page in ESMonitor	19
15-2- AVA4-ES100 Control Page in ESMonitor	20
15.2.1 Channels parameters	21
15.2.2 Equalisation window	21
15.2.3 “Link” button	23
15.2.4 GPIO Setup and Status	24

1- WELCOME!

Thank you for purchasing AuviTran's AVA4-ES100 device. We hope you will enjoy using it. AVA4-ES100 is a configurable EtherSound analog audio interface with 2 balanced analog audio inputs, 2 balanced analog audio outputs and a SPDIF digital audio output. AVA4-ES100 is a full ES100 compatible device and can be used without any restriction in any kind of ES100 network. AVA4-ES100 audio input sensitivity configuration enable a wide range of use from line input up to microphone input. Built-in AVA4-ES100 parametric equalizers and gain control on all inputs and outputs allow audio quality and intelligibility control in any environment. AVA4-ES100 is ideal for Public Address and wide distributed digital professional sound network systems.

A set of 4 GPI and 4 GPO makes the AVA4-ES100 locally or remotely controllable. Moreover AVA4-ES100 integrates a configurable RS232 serial interface. AVA4-ES100 embeds AuviTran virtual tunneling mechanism for connecting its local RS232 to another remote serial interface of an AuviTran or Yamaha ES100 device.

You will find herewith the necessary instructions to install your device. Please read them carefully as misuse of this device might cause serious damage to you and your environment.



2- ELECTRICAL AND ELECTRONIC INTERFERENCES

This device complies with Part 15 of the FCC rules. Operation is subject to the following two conditions:

1. This device may not cause harmful interference.
2. This device must accept any interference received including interference that may cause undesired operation.

FCC INFORMATION (U.S.A.)

1. IMPORTANT NOTICE: DO NOT MODIFY THIS UNIT!

This product, when installed as indicated in the instructions contained in this manual, meets FCC requirements. Modifications not expressly approved by Yamaha may void your authority, granted by the FCC, to use the product.

2. IMPORTANT: When connecting this product to accessories and/or another product use only high quality shielded cables. Cable/s supplied with this product MUST be used. Follow all installation instructions. Failure to follow instructions could void your FCC authorization to use this product in the USA.

3. NOTE: This product has been tested and found to comply with the limits for a Class B Digital device, pursuant to Part 15 of the FCC Rules. These limits are designed to provide reasonable protection against harmful interference in a residential environment. This equipment generates, uses and can radiate radio frequency energy and, if not installed and used according to the instructions found in the users manual, may cause interference harmful to the operation of other radio communications. Compliance with FCC regulations does not guarantee that interference will not occur in all installations. If this product is found to be the source of interference, which can be determined by turning the unit "OFF" and "ON", please try to eliminate the problems by using one of the following measures:

Relocate either this product or the device that is being affected by the interference.

Utilize power outlets that are on different branch (circuit breaker or fuse) circuits or install AC line filter(s).

In the case of radio or TV interference, relocate/reorient the antenna. If the antenna lead-in is 300 ohm ribbon lead, change the lead-in to co-axial type cable.

If these corrective measures do not produce satisfactory results, please contact the local retailer authorized to distribute this type of product. If you cannot locate the appropriate retailer, please contact Yamaha Commercial Audio Systems, Inc., Electronic Service Division, 6600 Orangethorpe Ave, Buena Park, CA90620.

The above statements apply ONLY to those products distributed by Yamaha Commercial Audio Systems, Inc. or its subsidiaries.

COMPLIANCE INFORMATION STATEMENT (DECLARATION OF CONFORMITY PROCEDURE)

Responsible Party : Yamaha Commercial Audio Systems, Inc.

Address : 6600 Orangethorpe Ave.,
Buena Park, Calif. 90620

Telephone : 714-522-9011

Type of Equipment : EtherSound Analog Audio Interface

Model Name : AVA4-ES100

This device complies with Part 15 of the FCC Rules.

Operation is subject to the following conditions:

- 1) This device may not cause harmful interference, and
- 2) This device must accept any interference received including interference that may cause undesired operation.

See user manual instructions if interference to radio reception is suspected.

3- LIMITATION OF LIABILITY

In no case and in no way, the provider of this device (AuviTran, the distributor or reseller, or any other party acting as provider) shall be liable and sued to court for damage, either direct or indirect, caused to the user of the device and which would result from an improper installation or misuse of the device. "Misuse" and "improper installation" mean installation and use not corresponding to the instructions of this manual.

Please note that graphics given in this manual (drawings and schemes) are only examples and shall not be taken for a real vision of your own equipment configuration.

AuviTran is constantly working on the improvement of the products. For that purpose, the products functionalities are bound to change and be upgraded without notice. Please read carefully the User's manual as the new functionalities will be described therein.

4- TRADEMARKS

All trademarks listed in this manual are the exclusive property of their respective owners. They are respected "as is" by AuviTran. Any use of these trademarks must receive prior approval of their respective owners. For any question, please contact the trademark's owner directly.

5- COPYRIGHT

The information in this manual is protected by copyright. Therefore, reproduction, distribution of whole or part of this manual is strictly forbidden without the prior written agreement of AuviTran.

6- AUVITRAN WEBSITE / MORE INFORMATION

Please visit our website for any question of further inquiry concerning our product range. Updates will also be posted when available.

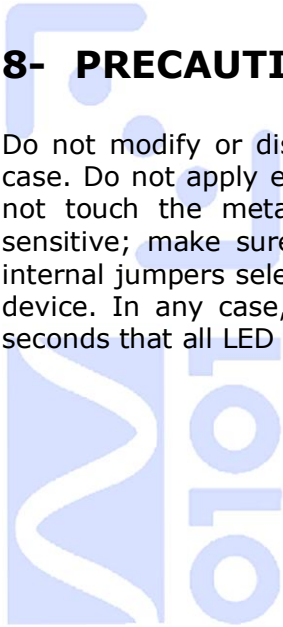
<http://www.AuviTran.com>

7- PACKAGE CONTAINS

- 1 AVA4-ES100 device
- 1 power line connector (2 pins, 3.81 mm step) for DC power supply version
- 1 cord set for AC power supply version
- 1 power supply connector (2 pins, 3.81 mm step) for DC power supply
- 4 analog inputs and outputs connectors (3 pins, 3.81 mm step)
- 2 GPIO connectors (6 pins, 3.81 mm step)
- 1 metal hook for security sling attach

8- PRECAUTIONS

Do not modify or disassemble the board. The guarantee shall be null and void in that case. Do not apply excessive pressure on connectors or any other part of the board. Do not touch the metallic sharp parts (pins) of the board. This board is electrostatic sensitive; make sure you check this before touching or using it. Few parameters are internal jumpers selectable. Please carefully read referring paragraph before opening the device. In any case, always unplug the main power cord of the device, and wait few seconds that all LED are off before opening the device.



9- TECHNICAL SPECIFICATIONS OF THE DEVICE

General	
Size	1/3 of 1U 19" rack : 145 mm x 40 mm x 203mm
Power Consumption	5 Watts
Power Supply	12VDC 0.4 A or 100-240VAC
Storage: Temp/Humidity	- 5°C to 70°C / 0% to 95% (non-condensing)
Operating: Temp/Humidity	0 °C to 50°C / 5% to 90% (non-condensing)
Connectors	1x2 pole Euroblock connector (pitch 3.81 mm) for DC power supply; 2x3 pole double row Euroblock connector (pitch 3.81mm) for analog inputs and outputs; 1x6 pole double row Euroblock Connector (pitch 3.81mm) for GPIO. 2x RJ45 connectors for network connections

Audio Inputs and Outputs	
Number of i/o	Up to 4 mono audio inputs and/or outputs software selectable (2xAin+2xAout, 2xAin+1xSPDIF, 2xAout+1xSPDIF)
Number of inputs	2 Analog Inputs Inserted in any of the 128xEtherSound™ channels(64 upstream or 64 downstream)
Number of outputs	2 Analog Outputs , 1 SPDIF output (Stereo) extracted from any of the 128xEtherSound™ channels(64 upstream or 64 downstream) (1) (2)

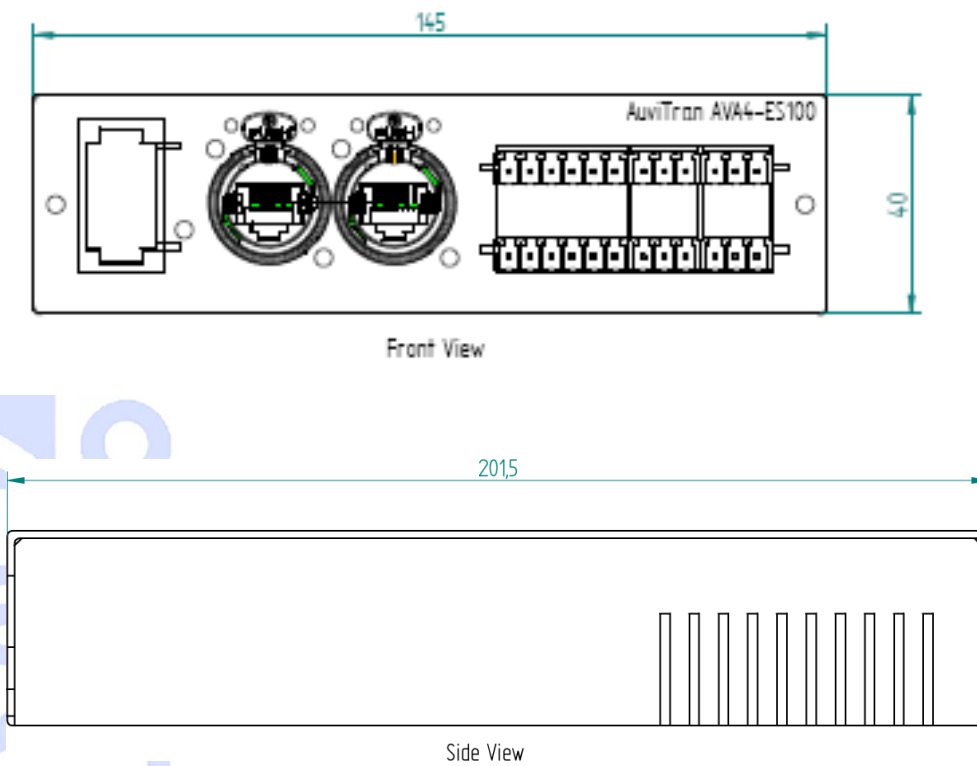
(1) SPDIF output replaces GPO2 by jumper selection (2) When only 2 outputs SPDIF and analog output play the same EtherSound channels (3) Serial port replaces GPO3 & 4 by jumper selection

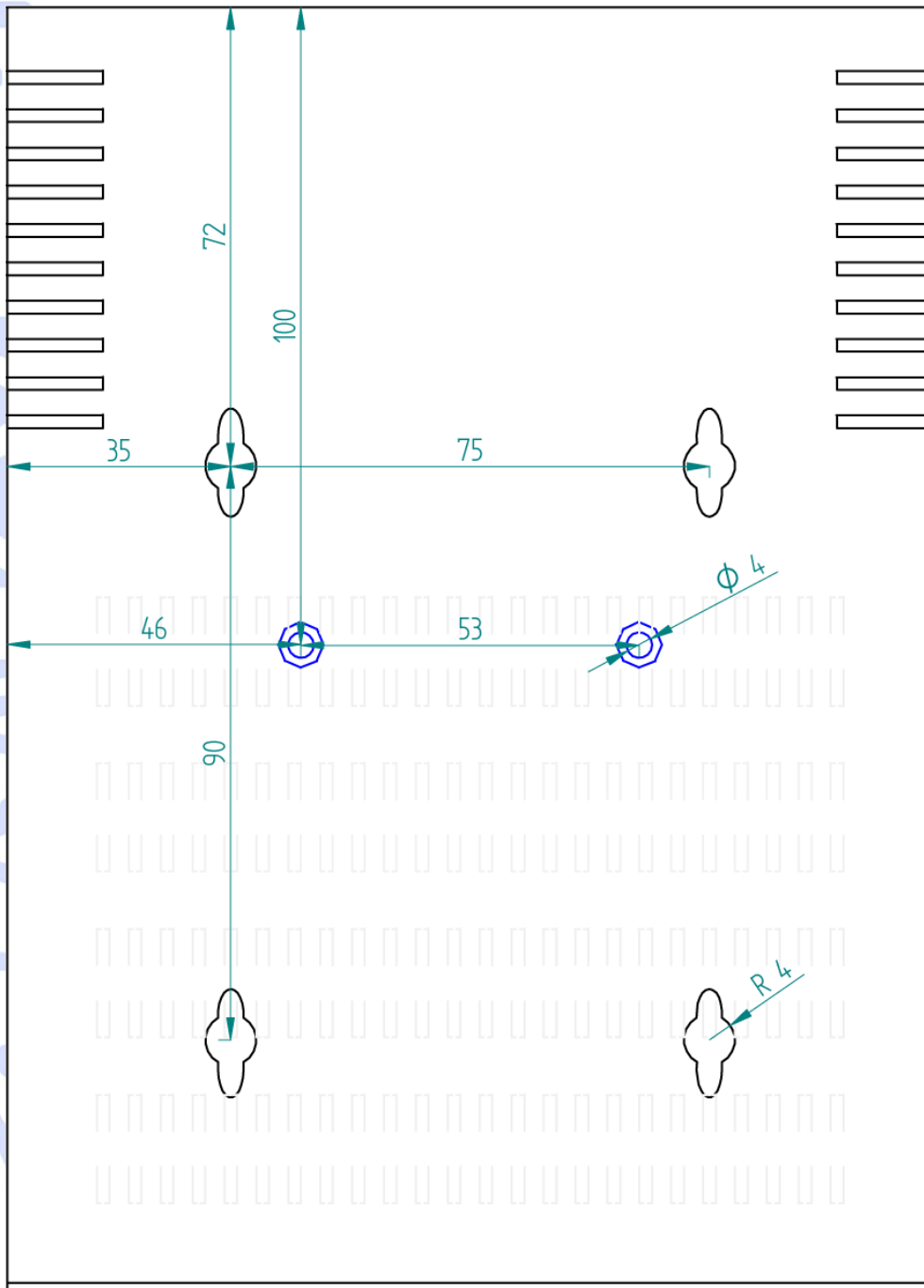
Audio Specifications	
Sampling Frequency	44.1 kHz / 48 kHz
A/D and D/A resolution	24 bits
Frequency response	20Hz – 20Khz @ +/- 0.2 dB
Dynamic Range	>100dB
Total harmonic Distorsion	<-95dB
Input Specification	Balanced analog, +22dBu, +10dBV or -44dBu (jumper), <100 Ω Impedance – 12V Phantom power available for microphone
Output Specification	Servo-balanced, +22dBu, 22,2 kΩ Impedance, 127dB/1dB step digital attenuator

GPIO Specifications	
GP In	4x Opto-isolated. +60Vdc maximum input voltage.
GP Out	4x +60Vdc/1A open drain Darlington per GPO. Internal +12Vdc available (100mA max).
Serial interface	RS232 Rx/Tx serial port interface (3)

Development and Integration Environment	
OS Supported	Windows 32 bits Vista/XP
AVS-ESMonitor	AVS-ESMonitor enables to remotely set, control and monitor an EtherSound network and provides enhanced control pages to manage the AVA4-ES100 specific parameters.
Development Tools	PC Telnet based development tools allowing access and control of all of the EtherSound devices' parameters.

10- MECHANICAL OUTLINES



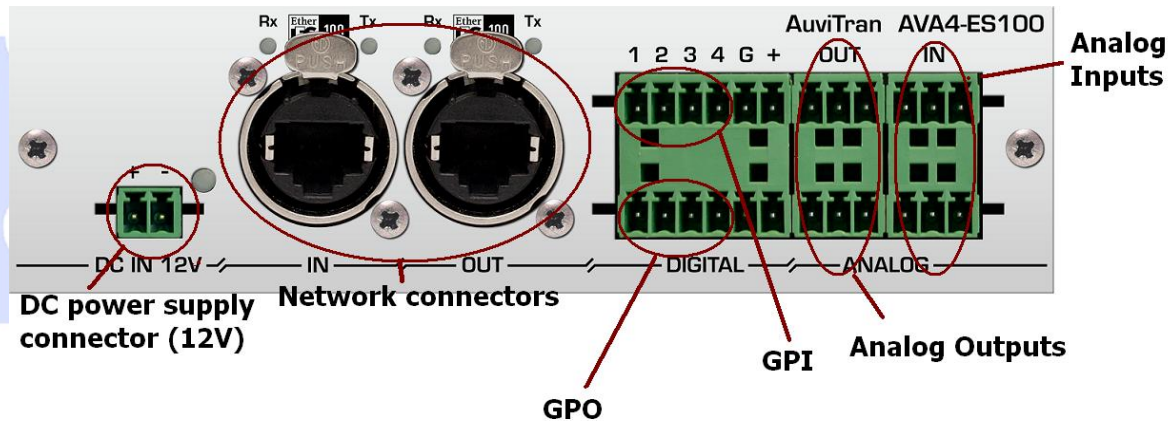


Bottom View

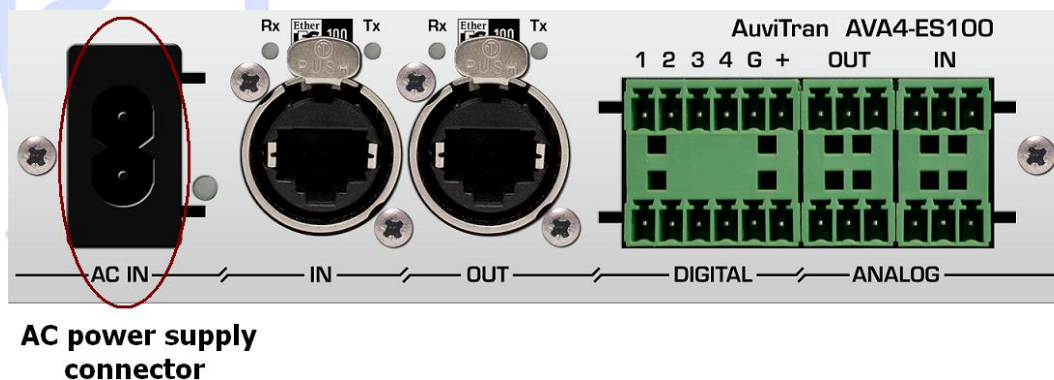
11- AVA4-ES100 REAR PANEL

AVA4-ES100 is available with DC and AC power version.

11-1- AVA4-ES100 DC Power version

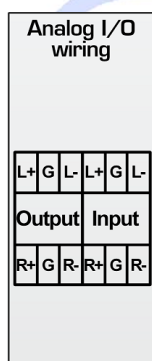


11-2- AVA4-ES100 AC Power version

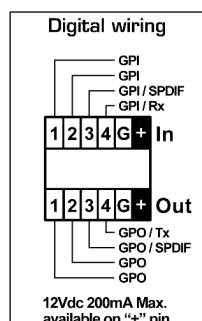


11-3- Wiring

Screen-print on the top box cover illustrates how to wire device:



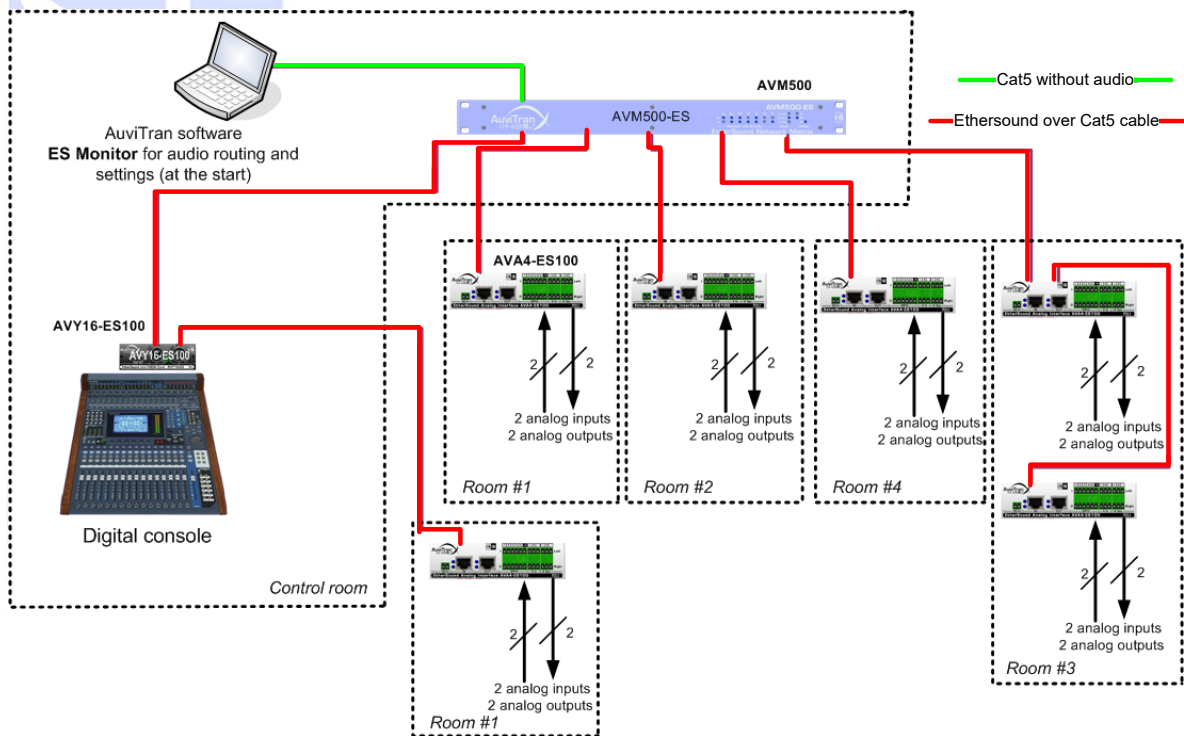
Pins L+ (positive Left) and R+ (positive Right) are positive analog in/outputs while L- (negative Left) and R- (negative Right) are negative analog in/outputs. G is the ground (0V).



In GPI and GPO connectors, one Ground pin and one +12V pin are available per connector. GPIO configuration is explained in chapter 13.3.

12-ARCHITECTURE USING AVA4-ES100

Here is a typical architecture using AVA4-ES100 associated with others EtherSound products.



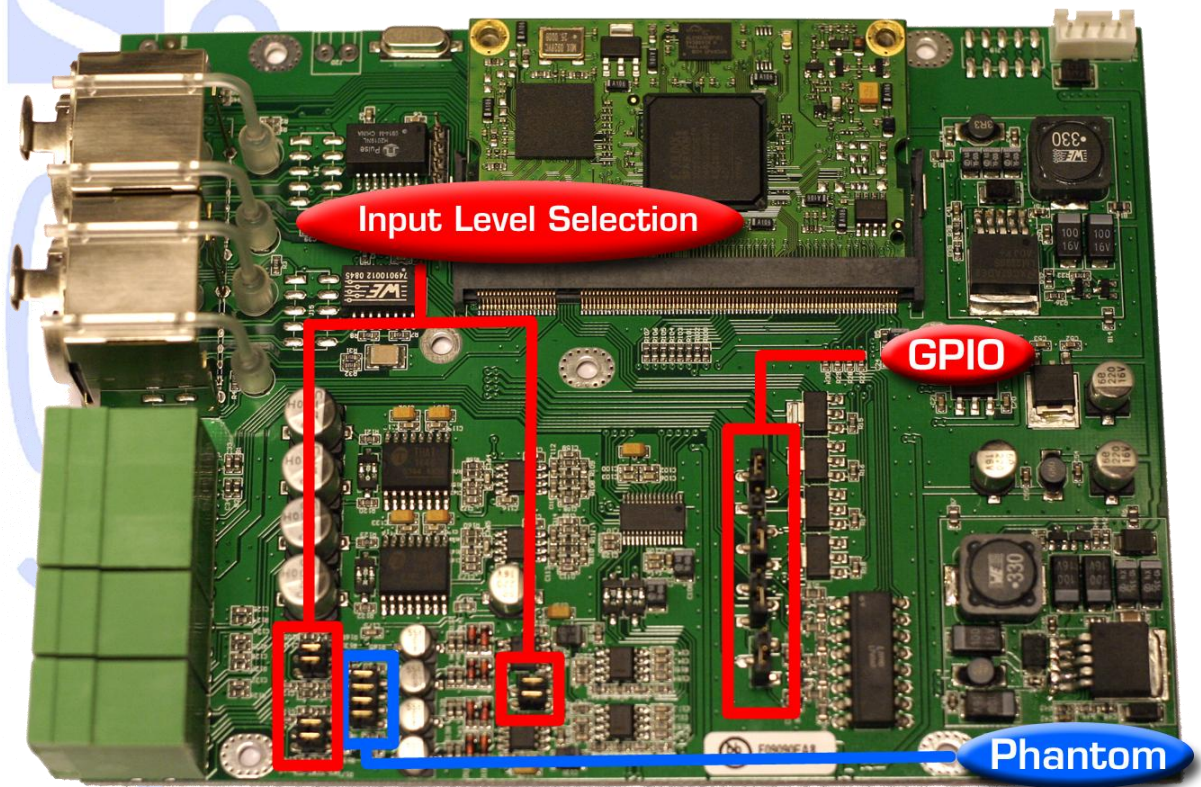
This architecture is typical for audio distribution in theatre lodges, VIP rooms ... AVM500-ES (primary master) receives digital audio signal from digital console over Ethersound thanks to AVY16-ES100, and sends it to AVA4-ES100. Using ES-Monitor, you can send custom audio to each room with different parameters (equalization, gain...) depending on characteristics of each room.

13- HARDWARE MODE SELECTION

Some of the AVA4-ES100 functionality are only hardware configurable. Standard jumpers are used to select appropriate function. These functions are divided in three groups:

- Maximum input level for 0 dBFs (+22dBu, +10dBu, -44dBu)
- +12V Phantom power supply
- GPIO connector configuration

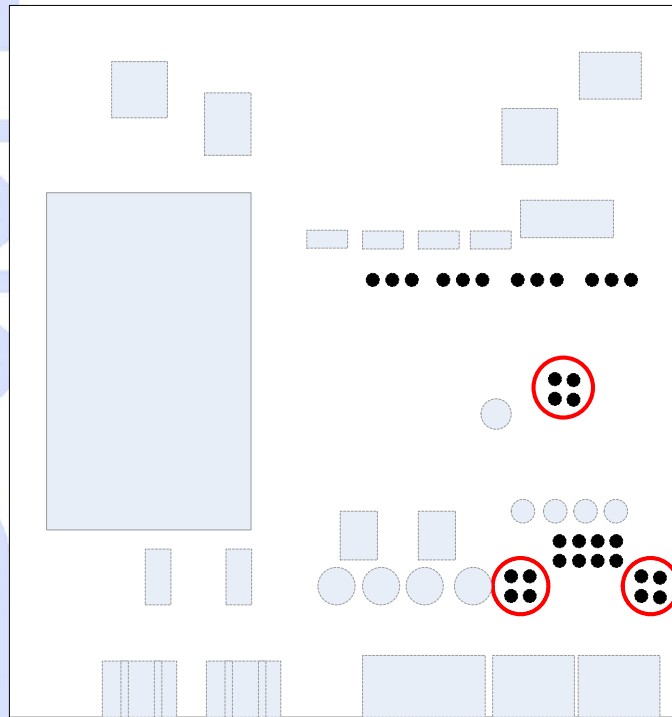
Phantom power supply configuration is made of for two-point pin headers. GPIO configuration is made of one line of seven three-point pin headers. Maximum input level for 0 dBFs configuration is made of three groups of two two-point pin headers. You will find below a picture of the AVA4-ES100 board, to help find these pin headers.



Warning: This unit contains hazardous voltages. Access to these pin headers is only possible by opening the device. Please ensure that power supply source is unplugged and that all LED are off before opening the device. Do never open the device if power supply cord is plugged.

13-1- Maximum Input Level for 0 dBFs

Schematic below helps you to locate where the pins are. You can also notice that there is a space between each pair to avoid confusion when trying to put the jumper on the pins.



Factory default configuration is +22dBu. Jumpers are delivered separately with the product. You can unplug jumpers or put only on one pin of each pin header (Fig. 1).

Following schematics represent three available configurations for identical settings for left and right channel. Note that different settings can be set for left and right channels.

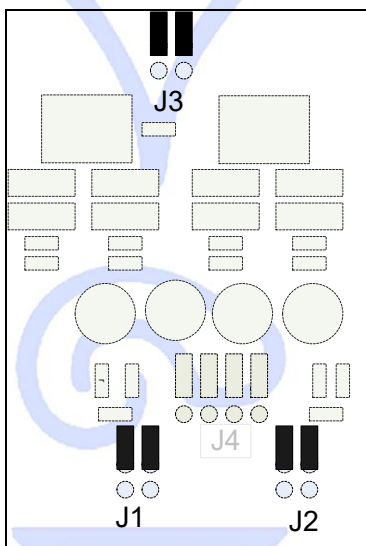


Fig.1 : +22dBu

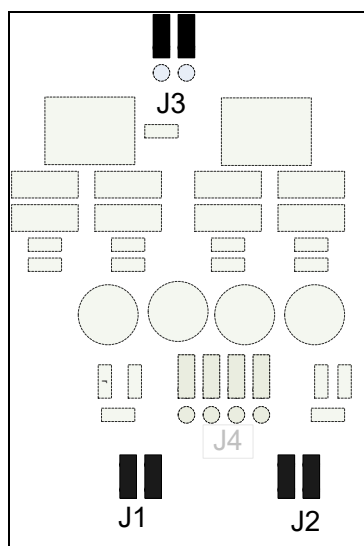


Fig.2 : +10dBu

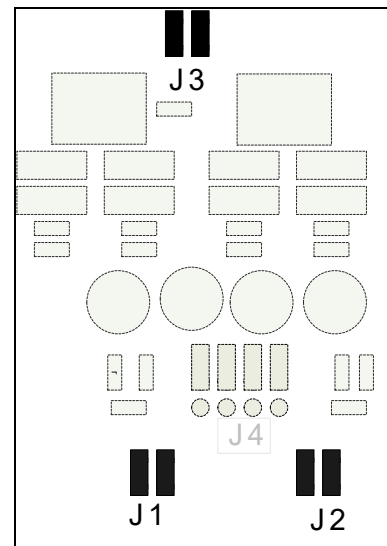


Fig.3 : -44dBu

Screen-print on the box top cover illustrates how to connect jumpers for each mode (Fig.4).

Max. Input Level for 0 dBFs	Left Channel	Right Channel
+22 dBu	J3 J1 ⊗ ⊗	J3 J2 ⊗ ⊗
+10 dBu	J3 J1 ⊗ ⊗	J3 J2 ⊗ ⊗
-44 dBu	J3 J1 ⊗ ⊗	J3 J2 ⊗ ⊗

Fig.4: Maximum Input Level for 0dBFs

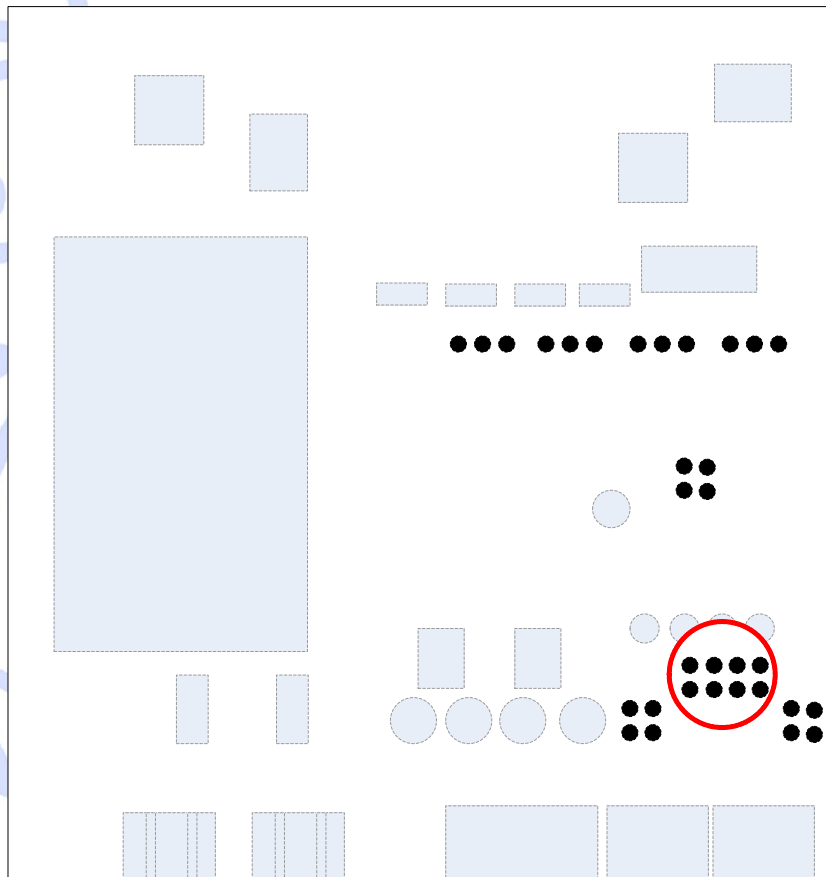
J1 and left side of J3 allow user to set left input channel.
 J2 and right side of J3 allow user to set right input channel.



Only these configurations are allowed. If jumpers are set in a different way, device behaviour is not guaranteed.

13-2- Phantom power supply

Schematic below helps you locating where the pins are. There is a space between each pair to avoid confusion when trying to put the jumper on the pins.



Factory default configuration is phantom power supply switched off. Jumpers are delivered with the product separately. You can unplug jumpers or put only on one pin of each pin header (Fig. 5).

Following schematics represent two available configurations for identical settings for left and right channel. Note that different settings can be set for left and right channels.

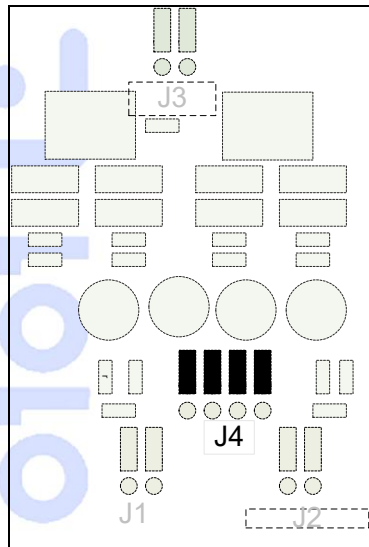


Fig.5: Phantom power supply switched off

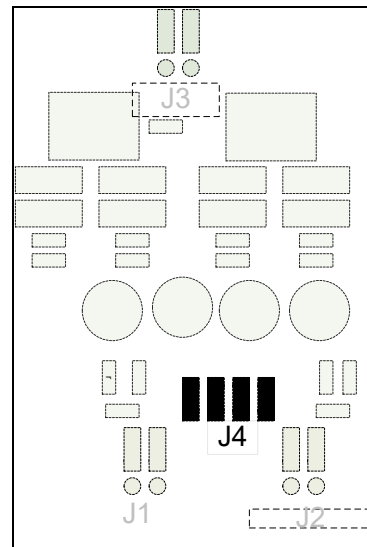


Fig.6: Phantom power supply switched on

The two left side pin header of J4 allow user to switch on/off phantom power left channel. The two right side pin header of J4 allow user to switch on/off phantom power right channel.

Screen-print on the box top cover illustrates how to connect jumpers to switch on/off phantom power supply (Fig.7).

+12V Phantom OFF		
+12V Phantom ON		

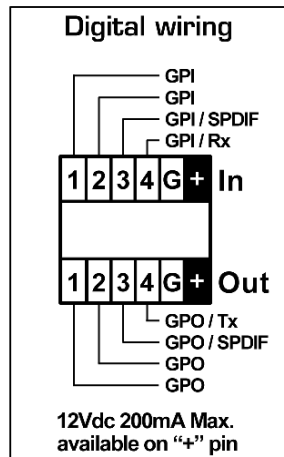
Fig.7: switch on/off phantom power supply



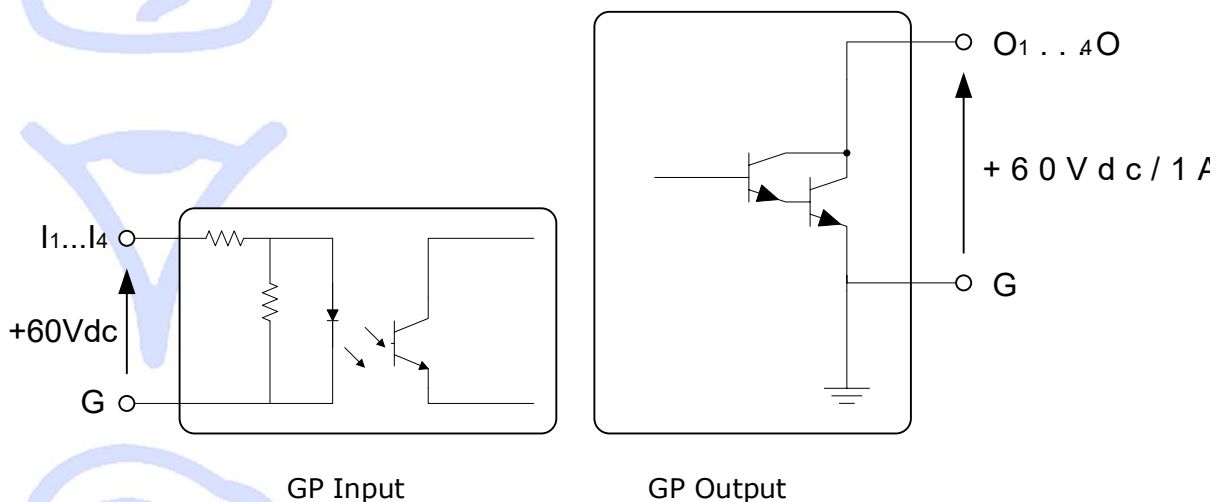
Only these configurations are allowed. If jumpers are set in a different way than above, device behaviour is not guaranteed.

13-3- GPIO connector configuration

GPIO connector is made of two lines of six pins. Each line provides four GPIO (one per pin), a ground pin (0 volt) and a +V pin (+12Vdc). Screen-print on the box top cover illustrate the wiring of this connector:

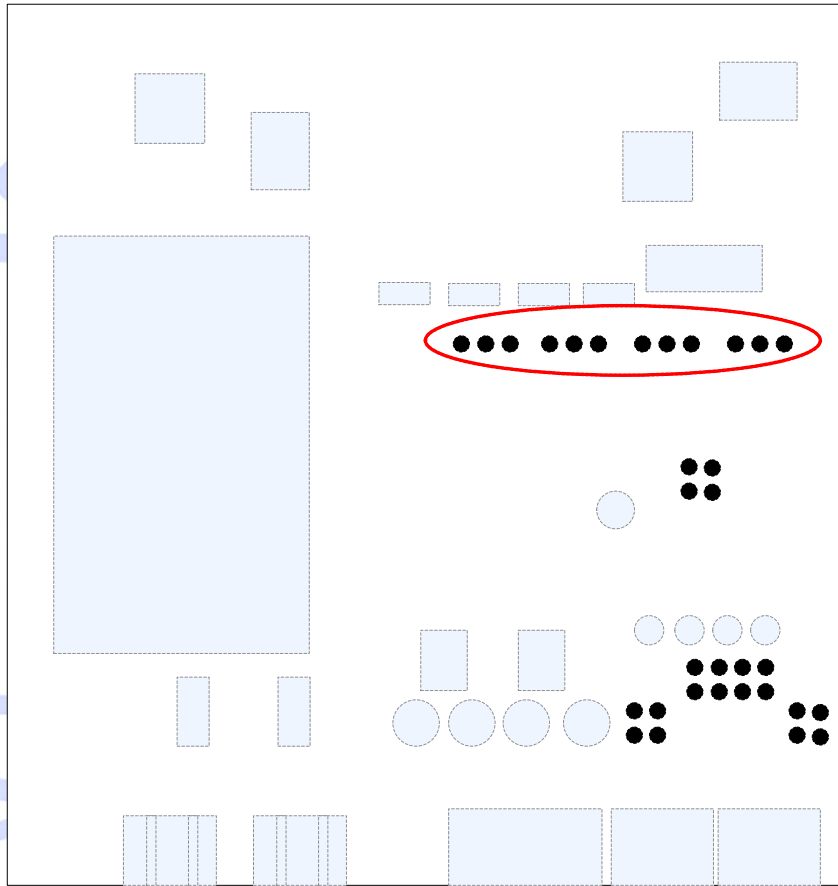


When configured as GPIO, all GPI are located on the top line of pins, and all GPO are on the bottom line. Inputs are opto-isolated. A maximum voltage of +60Vdc, referring to ground ('G' pin) is accepted. Outputs are open-drain. A maximum of +60Vdc/1A per output is accepted.



Two out of four GPIO can be configured to have a dedicated function. This selection is made thanks to one line of four three-pin headers as previously shown. Dedicated functions are RS232 signal (Rx, TX), SPDIF output and word clock input. Screen-print illustrates how to set jumpers in order to choose between GPIO and dedicated function.

Each configuration can be set individually. You can mix GPI, GPO and dedicated functions to fit your needs. Schematic below shows the pin headers on the board:



Factory default configuration is GPIO3, GPIO4 and SPDIF out available. Jumpers are delivered with the product (Fig 8).

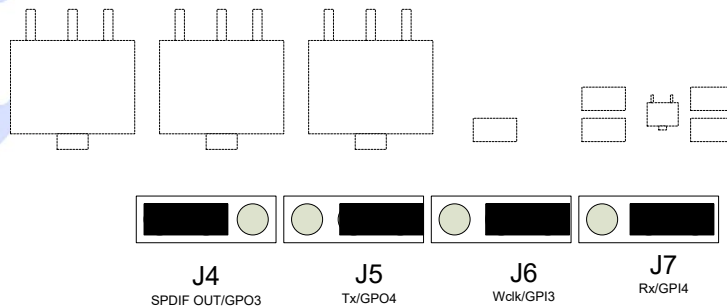


Fig.8: SPDIF OUT, GPIO3 and GPIO4

In order to have all GPIO available, you will have to place jumper J4, J5, J6 and J7 on the right (Fig. 9).

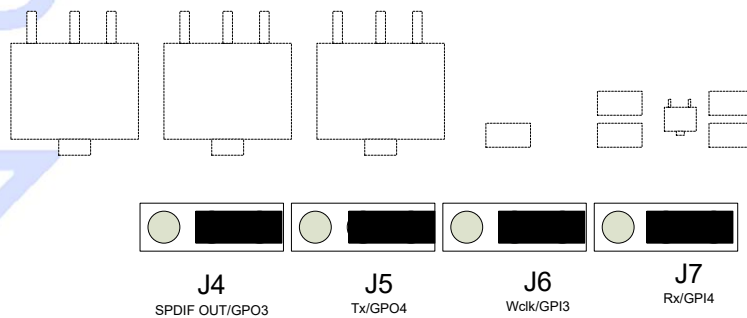


Fig.9: GPIO3 and GPIO4

In order to use RS232 port, you will have to place jumper J5 and J7 on the left (Fig.10).

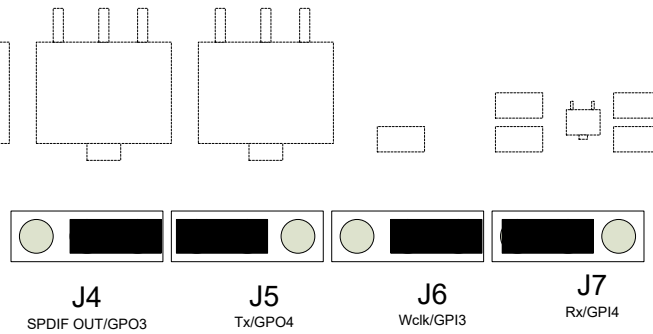


Fig.10: Rx/Tx and GPIO4

In order to use WCLK input, you will have to place jumper J6 on the left (Fig.11).

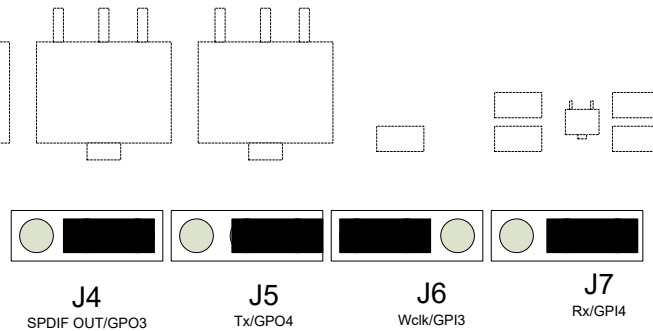


Fig.11: GPIO3, GPO4 and Word clock input

14-SOFTWARE DOWNLOAD AND INSTALLATION

Please visit our website to download the latest version of our EtherSound Monitor Software called ESMonitor (<http://www.AuviTran.com>) and save the file on your hard disk. ESMonitor requires Windows 2000, XP or Vista to function.

You are now ready for installation. Refer to the ESMonitor documentation for installation.

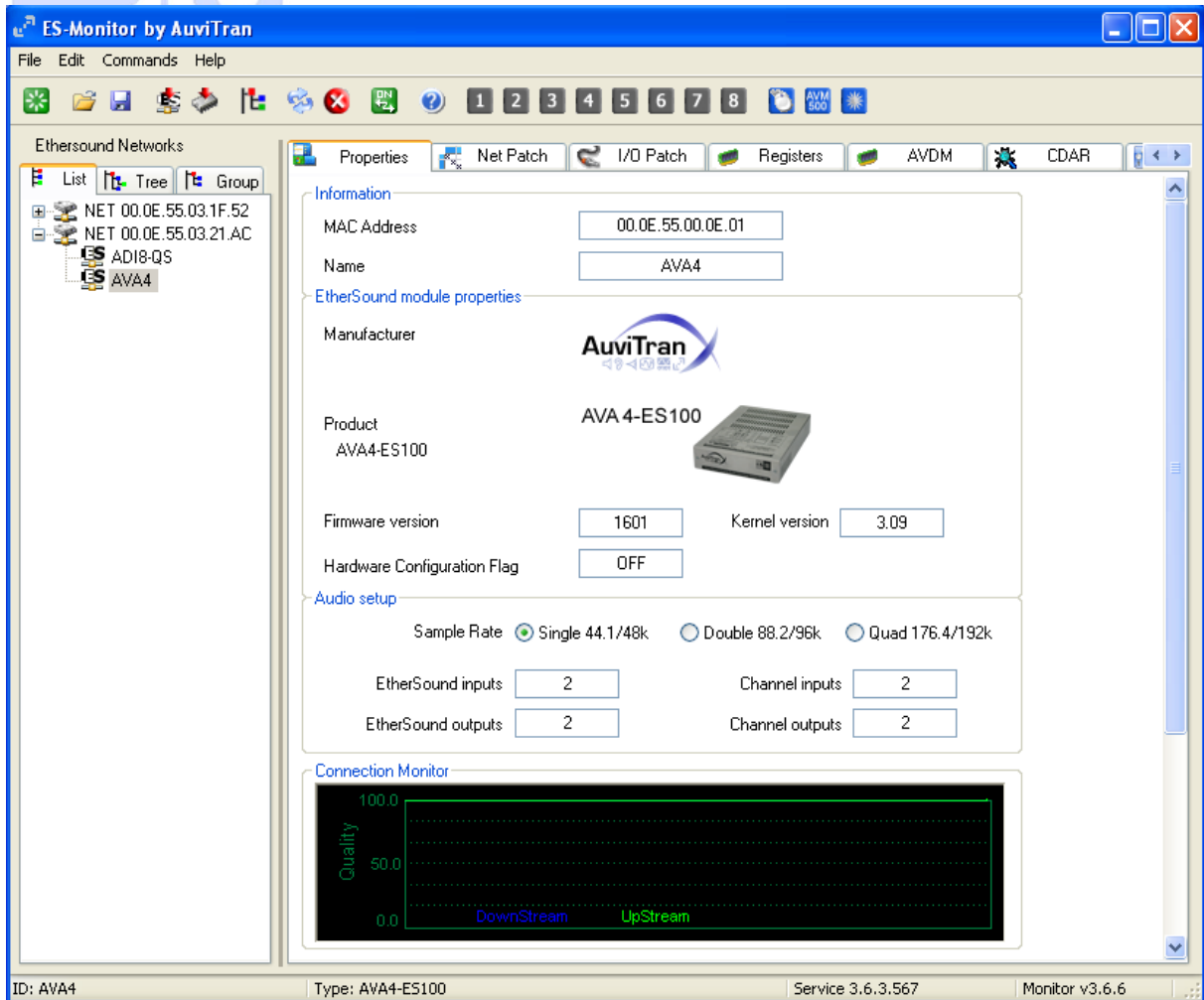
Once ESMonitor installed on your PC, you can run ESMonitor and manage any EtherSound devices connected to an EtherSound network. AVA4-ES100 is an EtherSound device with specific property and control page which is explained below. Refer to the ESMonitor documentation for generic EtherSound device management such as Enumeration of EtherSound devices and I/O routing.

15-GETTING START WITH AVA4-ES100 IN ES-MONITOR SOFTWARE

15-1- AVA4-ES100 Properties Page in ESMonitor

Computer where EtherSound Monitor was installed should be now connected to the primary master of the EtherSound network. The primary master is the first EtherSound-based device of the network.

After running ES-Monitor, select an AVA4-ES100 device on the device list or tree list. When selected, ES-Monitor will display the following information in the "properties" tab:

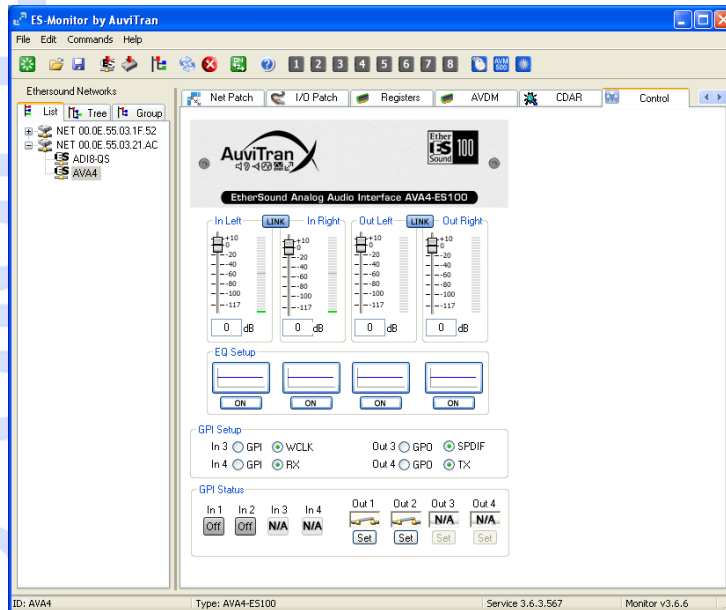


This page gives you general indication on device, such as MAC address, firmware and EtherSound kernel version, number of inputs and outputs available and network quality if activated.

Please refer to ES-Monitor documentation for a complete description.

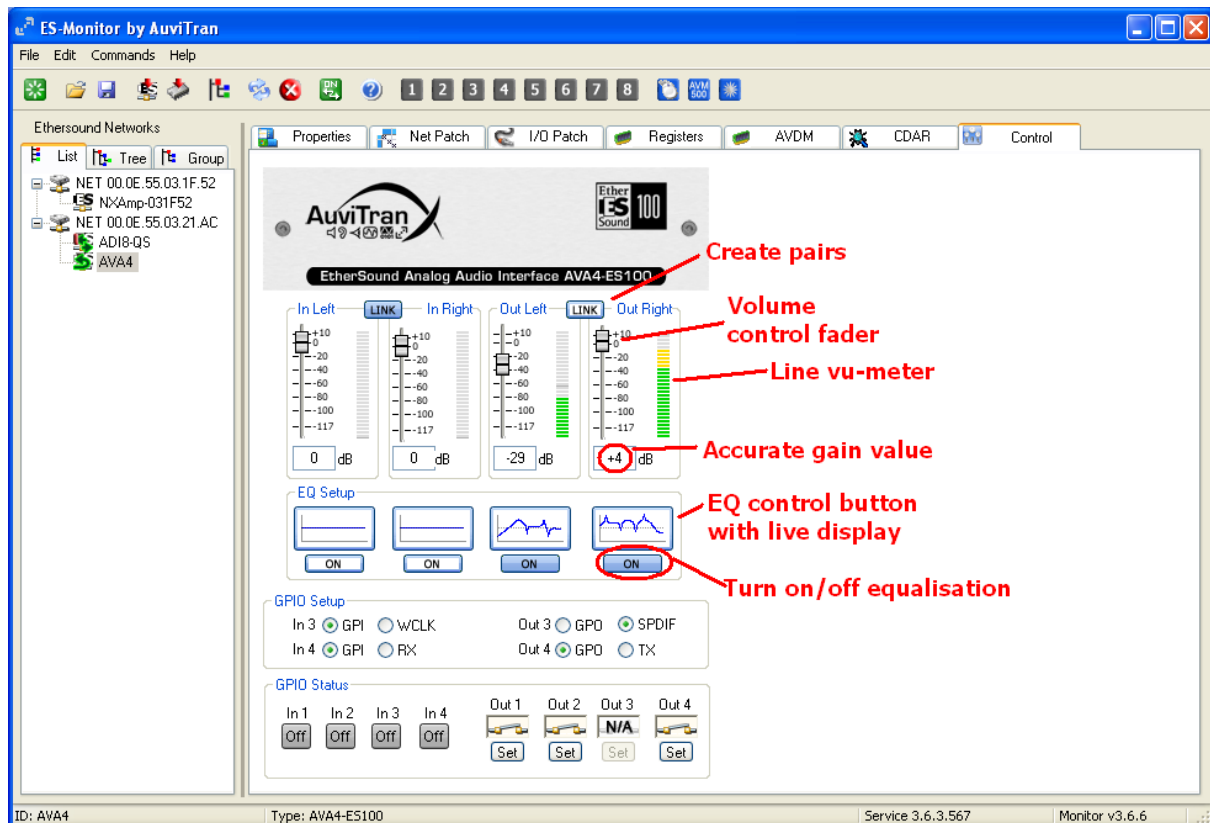
15-2- AVA4-ES100 Control Page in ESMonitor

When control page of selected AVA4-ES100 is activated, ES-Monitor displays:

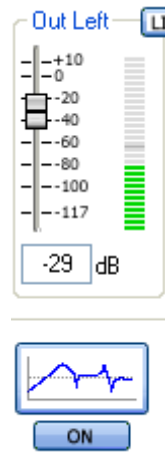


Basic features are displayed when first selecting the control page. It allows user to have a quick overview and control access to the device. This interface allows user to:

- See general status of the device (faulty status for instance)
- See and control gain for each channel
- See equalization configured on each channel, ability to turn on or off
- Create control pairs ("link" button)
- See GPIO Setup and Status



15.2.1 Channels parameters



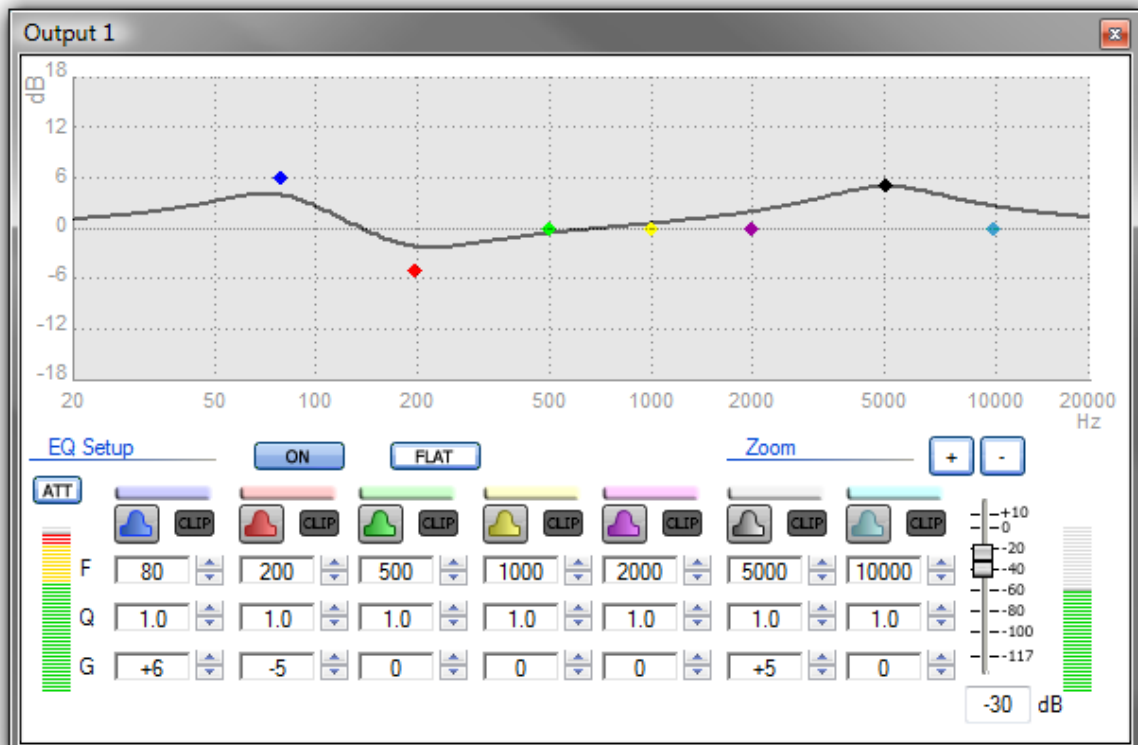
Each channel has the same set of individual parameters, i.e. accurate gain control (fader or direct numeric value), real-time vu-meter and equalisation control.

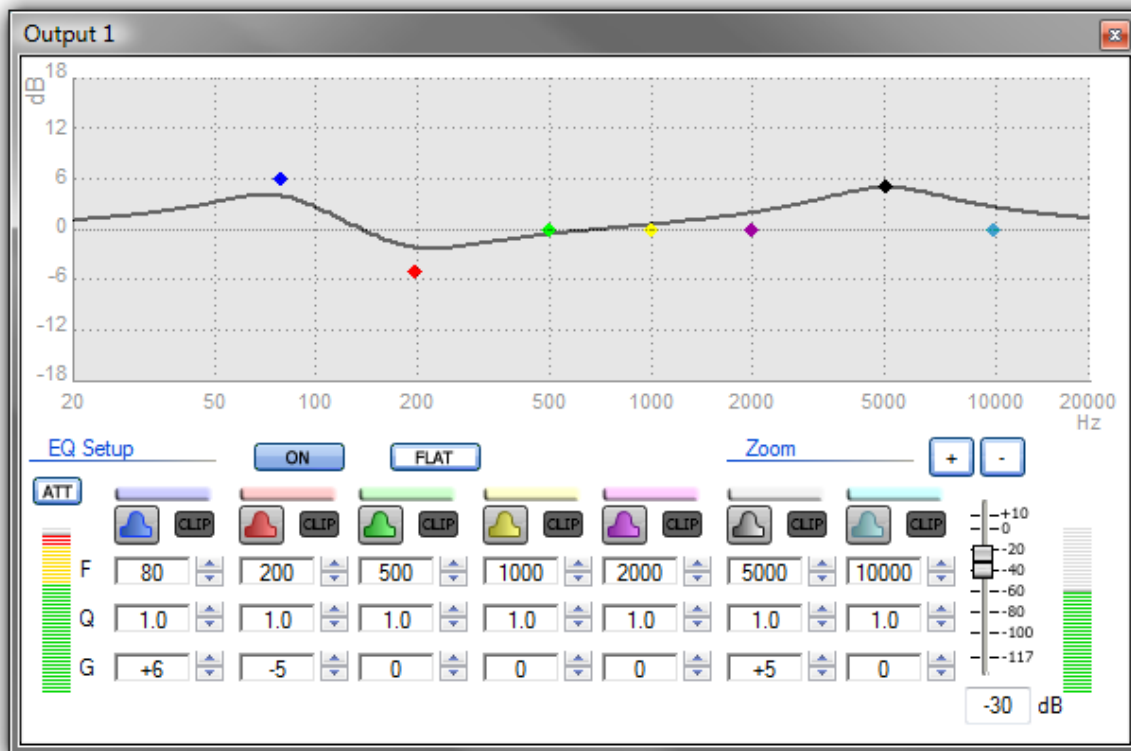
The gain can be set by moving the fader up or down, or directly by typing a numeric value between +10dB and -117dB. Using wheel mouse over gain slider also allows to adjust gain step by step.

Real-time vu-meter is a post-fader and post-EQ display. It shows the signal effectively sent to output or network.

Equalisation control button shows correction applied to the channel. It allows having a quick view without opening the EQ control window. "ON" button below shows if current correction is applied or not. You can directly click on it to turn on/off the EQ.

15.2.2 Equalisation window



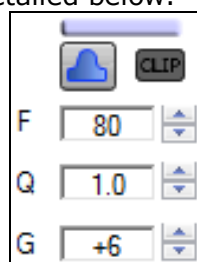


When clicking on EQ control button described above, equalisation control window pops-up. Each channel has its own equalisation window. Seven parametric filters are available for each channel. Each filter is represented by a different colour, helping user to quickly identify which band is currently selected.

Pre and post vu-meters (respectively on left and right) are displayed to help user tuning filter gain and global gain to the best value without clipping. A clip indicator is also available for each band, indicating in real time that the applied correction is clipping the signal.

To allow use of a positive correction (gain) even if the input level is too high, a local attenuator ("ATT" button) is available. This attenuator will apply a -12dB gain to the input signal, giving enough headroom for a correction.

Each band control is identical, and detailed below.






Three parameters commonly available on parametric equalizers can be set, i.e. frequency (F), quality factor (Q) and gain (G). These parameters are displayed numerically to provide an accurate view and control of each band. Of course, direct control on the graph is possible with the mouse. When the mouse pointer is over the desired point, the colour bar of associated filter is blinking. This informs user of which band is selected, in case of two or more points were covering each other. To change correction applied, just click on the desired point, and drag it over the graph. A horizontal move will change the frequency, as a vertical move will act on the gain. To change the quality factor, just roll up or down the wheel mouse.

Each band has a range of +/-18dB gain. If you want to apply a correction over this range, you should use two or more bands set on the same frequency. That way, gain of each band will be added. You can also use the Zoom "+" and "-" button to change graph scale, if needed.

Clip signal indicates in real-time if signal processed by the filter is over-range. It illuminates in red when occurs.

Quick configuration for high-pass and low-pass filter is also available by clicking on the button next to the clip display:

-  This indicates the filter is a standard parametric filter. This is the default setup.
-  First order high-pass filter. Default cut frequency is 100Hz.
-  First order low-pass filter. Default cut frequency is 19 kHz.

"Flat" button allows quick restore for all filters to a flat response. Be aware that this is not a bypass button. Previously set correction will be lost by clicking on the flat button. If you want to quickly listen to the signal "with and without" correction, use the "ON" button to switch equalization on or off.

Fader available in this window is another access to the fader available directly on the control page. Acting on this fader will act also in real-time the fader of the control page.

15.2.3 "Link" button



This button, available on the basic control page, allows user to create pairs of control, as a mixing console will do. When channels are linked together, following parameters will be duplicated:

- fader position (global gain value)
- equalization parameters
- equalization on/off status
- attenuator status

The link button between Output Left and Output Right links these two outputs. This is exactly the same for the button between Inputs Left and Right.

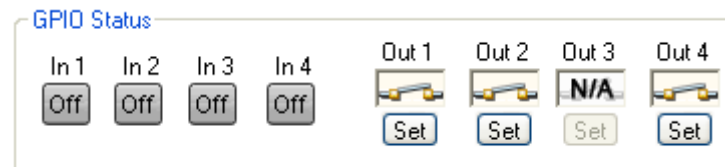
When clicking on a link button, a window opens, asking the user which channel should give its parameters to the other. Simply click again on link button to split the pair.



15.2.4 GPIO Setup and Status



As shown in chapter 13-3, GPIO connector can be configured to GPIO or dedicated function. GPIO setup box allows user to inform the software of which mode is selected for each GPI/GPO. As there is no way for software to detect jumper configuration, this procedure is needed to display right information.



This box is a real-time control/monitoring of GPIO state. When in GPI mode, each GPI displays in real-time the state of input with a dark "Off" icon, or a blue "On" icon. When in GPO mode, each GPO can be turned on or off by clicking on its respective "Set" button.

If GPI/GPO are set to a dedicated function, respective icon in GPIO Status box will change to "N/A" to inform user that there is no monitoring available.